



***“The complete office based software solution
for the management of plant and machinery”***

PLANT MANAGER

***“The complete office based software solution
for the management of plant and machinery”***



INTRODUCTION

Joyce Software Services was formed in order to produce software specific to the construction industry. Evolved from a construction company, Joyce Software Services can call upon thirty years of experience. This insight has given us a thorough understanding into the IT requirements of the industry. Over the last five years we have designed and implemented software projects with the goal of improving efficiency and productivity. In our opinion one of the most important projects to date has been the solution to the nightmare that is the management of plant and machinery. We have the answer.....

THE CONCEPT

Introducing a new concept in construction IT, Plant Manager is the complete office based software solution for the management of plant and machinery, developed by a construction company for the construction industry.

THE PROBLEM

At a given point in time all companies will either purchase or hire an item of plant and machinery. This is generally a substantial financial expense. For this reason alone, the importance in knowing the location of the item cannot be understated. It is hard enough to accurately determine the location of one item, but imagine for a moment that we are dealing with several or even a hundred items of plant or machinery. The management of these items becomes paramount. As you will be aware, knowing the location is simply not enough. There are many more problems relating to plant management :-

- ***How long has an item of plant been on hire?***
- ***Where was it hired from?***
- ***How much is hired plant costing me?***
- ***What plant do I have on hire?***
- ***What plant do I own?***
- ***What plant do I have available?***
- ***Do I have plant on hire that shouldn't be?***
- ***How do I manage invoice queries?***
- ***How do I manage quotations?***
- ***How do I find a suppliers details?***



CURRENT SOLUTIONS

At present there are several methods to manage plant and machinery. These generally fall into four categories, each method has its advantages and disadvantages. Below is a summary of each method :-

- **Manual Systems**

A paperwork system which is time consuming and finding information is difficult. As information is hand written it is not reliable, mistakes are easily made and space is at a premium.

- **Spreadsheet Based Systems**

Works well with few items of plant and is easily viewable. However minimal information can be recorded and large volumes of plant become harder to manage. Accuracy suffers as a result.

PLANT MANAGER

The complete solution to the management of plant and machinery. Specifically designed to accurately control hired and purchased equipment. Designed by a company that understand the needs of the plant manager and all aspects of plant management.

- **Bespoke Systems**

Designed by a third party company usually with little or no knowledge of the construction industry. Often costly and failing to live up to expectations, they produce a plant management tool the way they see it and not the way you envisaged.

- **Database Systems**

Potentially an accurate way to manage plant but requiring a degree of computing expertise . If designed poorly can lead to inaccurate information and production of incorrect reports. They are also difficult to maintain.

BENEFITS

- Hire plant quickly and efficiently and the ability to view historical data for all items of plant.
- Time Saving. The management of plant will now take minutes rather than hours and days, reports can be produced instantly.
- The quoting system provides enough information to ensure that you always hire from the right supplier at the right price.
- Utilise resources. Never hire an item of plant when you don't need to, and never have plant on hire any longer than you planned to. Plant Manager will inform you if you try to hire an item of plant that you already own and is not being used.
- An intelligent search facility, find information quickly and efficiently.
- Manage invoice queries easily. Queries can be logged for each plant order enabling you to track outstanding credits and over charges.
- A comprehensive supplier database of nearly 2000 companies. Easily find suppliers in any given area of the UK, complete with contact details.
- Manage your own plant efficiently, arrange service schedules and easily view details of your plant from information relating to trackers and purchase details.

A comprehensive reporting system.

The ability to produce a wide range of detailed reports which include viewing plant by location, by supplier, by description and supplier details to name but a few. Reports can be broken down into many combinations. The combination of reports are limited only to the imagination of the user.



Hired and purchased plant.

Accurately control where both hired and purchased plant is located at any given time whilst having the ability to produce accurate historical information for each item.



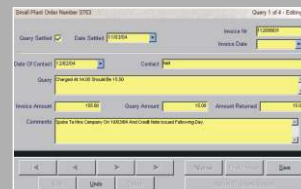
A costing system.

Each item of hired plant can be allocated an ongoing cost figure. At any one time it is easy to see how much an individual item of plant has cost. It is also possible to see how much money has been spent with one supplier or on a particular site. When entering a cost figure Plant Manager will analyse the companies quote to ensure that the item is being charged correctly.



Manage invoice queries.

Plant Manager will allow the user to record invoice queries relating to hired items of plant. In turn reports can be viewed so that at any time you can tell how many plant queries you have with a particular supplier or on a particular site. This is a major benefit of Plant Manager and is an area that will ensure you save money.



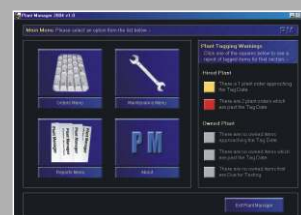
A quotation system.

For each plant supplier a quotation can be entered. When hiring an item of plant the user can select the magic 'i', this will in-turn produce a screen showing the cheapest quotes, the most used company, your top three suppliers and more. This means no longer hunting through quotes when hiring plant. Plant Manager will even enter the information for you!



A tagging system.

Each hired or owned item can be tagged. This is where a date can be electronically recorded for an item of plant when it is expected to be no longer needed. A warning system then reminds the user that the item is no longer required or is approaching off hire date. This stops plant from being left on site unnecessarily as often happens. In addition owned plant service dates can be tagged.



THE PACKAGE

Plant Manager is available as a leased product with a 12 month minimum lease. It is available either as a stand alone single version or as a network version for multiple users.

Plant Manager is backed by Joyce Software Services' training team and support . The Support is inclusive within the lease agreement and consists of telephone, email and internet support. The internet support is in the form of an intuitive knowledge base system. The support also includes any necessary updates and additional suppliers if required.

Joyce Software Services can provide consultancy to help ensure that Plant Manager works within your existing computer system. We can also advise on hardware requirements and perform any installation that may be required.

SYSTEM REQUIREMENTS

- *Windows 98 SE or above*
- *Pentium II or above*
- *20 MB hard disk space*
- *Inkjet/laser printer, please contact regarding recommendations*
- *A free parallel or USB port for security dongle*
- *64 MB Ram based on Windows 98*
- *128 MB Ram based on Windows 2000/Xp*
- *Minimum 800*600 screen resolution*
- *CD Rom drive*
- *Internet recommended for support only*

CONTACT DETAILS

Please call or email us now to request further information.

Phone: 0121 773 6821

Email: sales@plant-manager.co.uk

www.plant-manager.co.uk

